

# Via the [www.base.blackberry.com](http://www.base.blackberry.com)



BlackBerry from BASE

## Welcome to BlackBerry!

### New Users

You need to create an account to begin sending and receiving email on your BlackBerry device. Please turn on your device and ensure that it is connected to the wireless network. Then click "Create New Account" below to begin.

[Create New Account](#)

Select  
"Create New Account"

### Existing Users

To log in, please provide your user name and password below.

User name:  [Require Assistance?](#)

Password:  [Forgot Password?](#)

[Log In](#)

[Nederlands](#) [English](#) [Français](#)

Copyright 2006-2010 Research In Motion Limited. All rights reserved. [Legal Information.](#)



## Blackberry BIS activation

# Via the www.base.blackberry.com

**Account Setup**

Welcome to BlackBerry Internet Service!

To proceed with account setup, please review the following Legal Terms and Conditions and select "I Agree" to acknowledge that you have read, understood, and agree to be bound by the Legal Terms and Conditions.

long as RIM deems necessary (but not longer than as permitted by applicable law), including, without limitation, Your user ID and password for each of Your third party email service account (s), and to disclose the same to the applicable third party email service providers for activation, billing, provision, maintenance and deactivation purposes.

11. Conflict. If any of the terms and conditions of this Addendum conflict with the terms and conditions of the BBSLA or with any other addendum or amendment to the BBSLA, these terms and conditions shall govern to the extent of the inconsistency, but only as it applies to the BlackBerry Prosumer Services.

I have read and understand the Legal Terms and Conditions.

Do you agree to be bound by the Legal Terms and Conditions?



## Blackberry BIS activation

# Via the [www.base.blackberry.com](http://www.base.blackberry.com)

## Account Setup

To begin creating your BlackBerry Service account, type your device details below.

Device PIN:

Device IMEI:

Cancel

Continue

Enter the "Device PIN" &  
"Device IMEI" + click on  
"Continue"

To find your PIN perform one of the following actions:

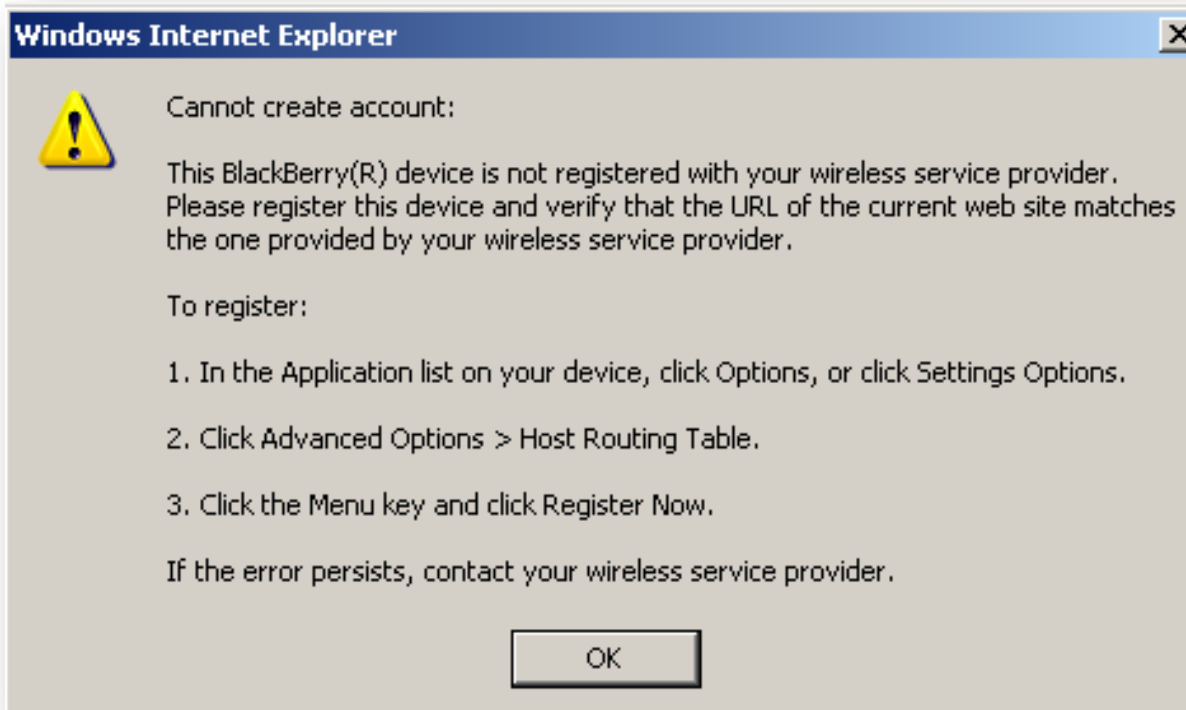
- In the BlackBerry device options or settings, click **Status**.
- Look for the PIN and IMEI information on the outside of the box that your BlackBerry device or BlackBerry-enabled device came in.
- Turn the BlackBerry device off and remove the battery. Look for the sticker on the BlackBerry device with the PIN information where the battery is usually located.

- BlackBerry device with the PIN information where the battery is usually located.
- Turn the BlackBerry device off and remove the battery. Look for the sticker on the outside of the box that your BlackBerry device came in.
  - Look for the PIN and IMEI information on the outside of the box that your BlackBerry device

## Blackberry BIS activation



# Via the [www.base.blackberry.com](http://www.base.blackberry.com)



## Blackberry BIS activation

# Via the [www.base.blackberry.com](http://www.base.blackberry.com)

**Account Setup**

Create a user name and password for your BlackBerry account. When you want to change your email settings, you will need these details.

User name:

Choose password:   Show Password  
8-16 characters, must include a mix of lower and upper case letters and numbers

Confirm password:

**Blackberry BIS activation**



# Via the [www.base.blackberry.com](http://www.base.blackberry.com)

**Set Up Email**

Add an existing email account (e.g. Yahoo!®, Google®, Microsoft® Exchange)  
 Need an email account (name@base.blackberry.com)?

---

**Add an existing email account (e.g. Yahoo!®, Google®, Microsoft® Exchange)**

Email address:  ?

Email password:  ?

Show Password



## Blackberry BIS activation

# Via the [www.base.blackberry.com](http://www.base.blackberry.com)

## Synchronize



Contacts



Calendar

Calendar not available: Create a calendar at your email provider to enable calendar synchronization for this email account.

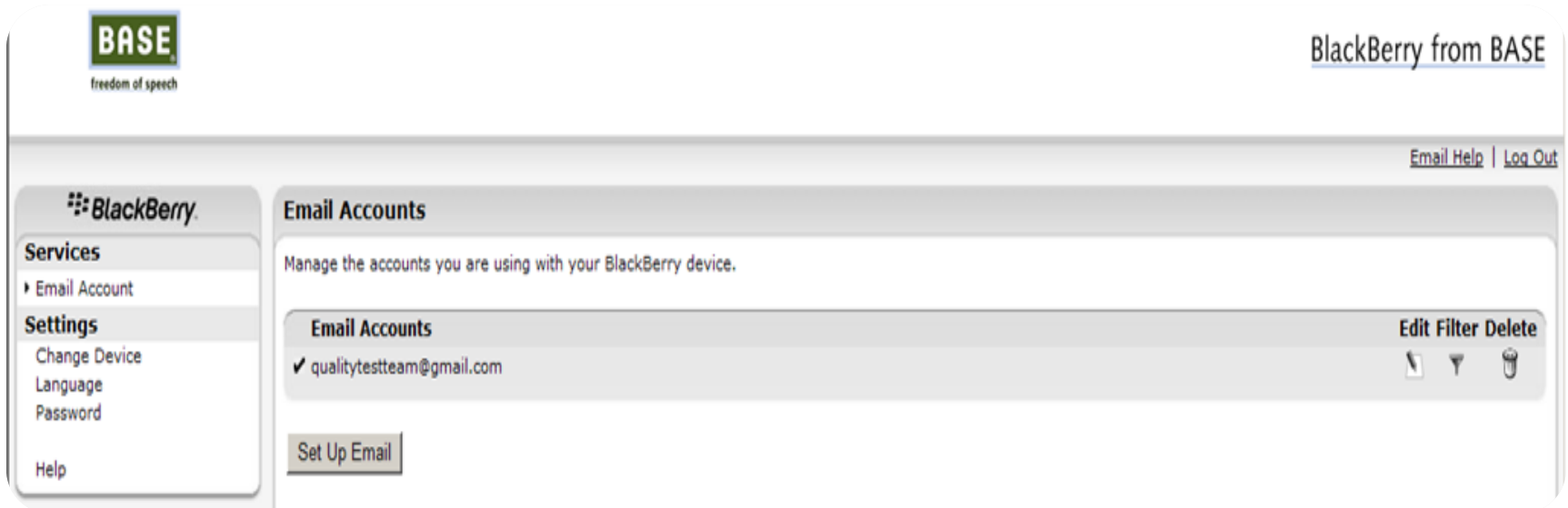
εγχειριδιζαριου γοι τριε email accounτ\*

Calendar not available: Create a calendar at your email provider to enable calendar



## Blackberry BIS activation

# Via the [www.base.blackberry.com](http://www.base.blackberry.com)



The screenshot shows the BlackBerry Base website interface. At the top left is the BASE logo with the tagline "freedom of speech". At the top right, it says "BlackBerry from BASE". Below the logo, there are links for "Email Help" and "Log Out". The main content area is divided into two columns. The left column contains a "BlackBerry" header and a "Services" menu with options: "Email Account", "Settings", "Change Device", "Language", "Password", and "Help". The right column is titled "Email Accounts" and contains the text "Manage the accounts you are using with your BlackBerry device." Below this, there is a table of email accounts. The table has a header "Email Accounts" and a sub-header "Edit Filter Delete". The table contains one row with the email address "qualitytestteam@gmail.com" and a checkmark icon. Below the table is a "Set Up Email" button.

**BASE**  
freedom of speech

BlackBerry from BASE

Email Help | Log Out

**BlackBerry**

**Services**

- ▶ Email Account

**Settings**

- Change Device
- Language
- Password

Help

**Email Accounts**

Manage the accounts you are using with your BlackBerry device.

Email Accounts	Edit	Filter	Delete
✓ qualitytestteam@gmail.com			

Set Up Email

 **Blackberry BIS activation**